

MT-5310W
Mobile Terminal System
User Manual



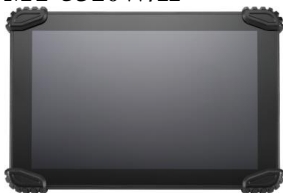
MT-5310W/R



Package Contents

- ✓ MT-5310W/R (x 1)
- ✓ Pistol grip (x1)
- ✓ 15W power adaptor (x 1)
- ✓ Stylus (x 1)
- ✓ RB-3200 Battery pack for pistol grip (x 1)
- ✓ User manual (x 1)
- ✓ Barcode scanner user manual (x 1)

MT-5310W/H



Package Contents

- ✓ MT-5310W/H (x 1)
- ✓ 15W power adaptor (x 1)
- ✓ Stylus (x 1)
- ✓ User manual (x 1)



**MT-5310W is required to be charged over 8 hours
when used for the first time.**

SOME IMPORTANT NOTES

FCC NOTES

This system meets industry & government requirements and applicable standards. This equipment generates, uses, and can radiate radio frequency energy and, if not installed and used in accordance with the instructions manual, may cause interference to radio communications. It has been tested and found to comply with limits for a Class A digital device pursuant to subpart B of Part 15 of FCC Rules, which are designed to provide reasonable protection against interference when operated in a commercial environment. Operation of this equipment in a residential area is likely to cause interference in which case the user at his own expense will be required to take whatever measures to correct the interference.

This device complies with part 15 of the FCC Rules. Operation is subject to the following two conditions: (1) This device may not cause harmful interference, and (2) this device must accept any interference received, including interference that may cause undesired operation.

CE CLASS A WARNING

This equipment is compliant with Class A of CISPR 32. In a residential environment this equipment may cause radio interference.

WARRANTY LIMITS

Warranty will terminate automatically when the machine is opened by any person other than the authorized technicians. The user should consult his/her dealer for the problem happening. Warranty voids if the user does not follow the instructions in application of this merchandise. The manufacturer is by no means responsible for any damage or hazard caused by improper application.

警告使用者

這是甲類的資訊產品，在居住的環境中使用時，可能會造成射頻干擾，在這種情況下，使用者會被要求採取某些適當的對策。

SAFETY INSTRUCTIONS

This equipment is not suitable for use in locations where children are likely to be present.

CONSIGNES DE SÉCURITÉ

Cet équipement ne convient pas à une utilisation dans des lieux pouvant accueillir des enfants.

BATTERY CAUTION NOTES

- Dispose of used batteries according to the instructions.
- Replacement of a battery with an incorrect type that can defeat a safeguard (for example, in the case of some lithium battery types)
- Disposal of a battery into fire or a hot oven, or mechanically crushing or cutting of a battery that can result in an explosion.
- Leaving a battery in an extremely high temperature surrounding environment that can result in an explosion or the leakage of flammable liquid or gas.
- A battery subjected to extremely low air pressure that may result in an explosion or the leakage of flammable liquid or gas.

BATTERIE ATTENTION NOTES

- Jetez les piles usagées conformément aux instructions.
- Remplacement d'une batterie avec un type incorrect qui peut annuler une sauvegarde (par exemple, dans le cas de certains types de batterie au lithium)
- Mise au rebut d'une batterie dans le feu ou dans un four chaud, ou écrasement ou coupure mécanique d'une batterie pouvant entraîner une explosion.
- Laisser une batterie dans un environnement environnant à des températures extrêmement élevées pouvant entraîner une explosion ou la fuite de liquide ou de gaz inflammable.
- Une batterie soumise à une pression atmosphérique extrêmement basse pouvant provoquer une explosion ou une fuite de liquide ou de gaz inflammable.

警告

本電池如果更換不正確會有爆炸的危險，請依製造商說明書處理用過之電池。

Product Feature

Ergonomic Design

Pistol grip shape handle is ergonomically designed for easy handling of the tablet.

Extra Protection

Hand strap strengthens the stability and eases user's fatigue during the hours of work.

All-in-one Solution

Optional dock station equips with a built-in 3" thermal printer and various I/O connectivity; once the tablet is integrated with the dock station, an all-in-one POS is instantly at your disposal.

Versatile Function

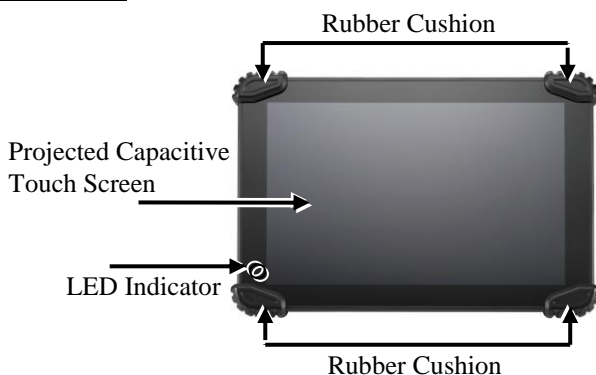
MSR attachment and 1D or 2D barcode scanner built in the pistol grip; MT-5310W offers more than just mobility but versatility.

Long Hour Operation

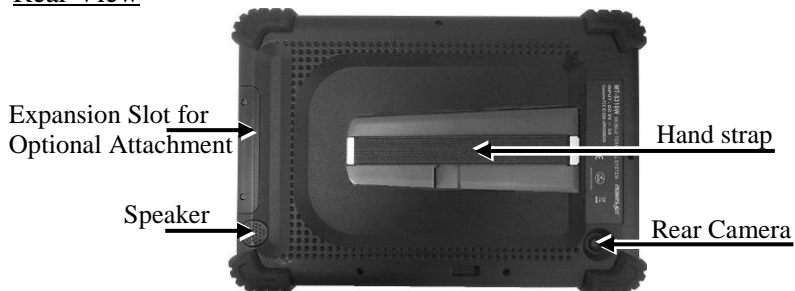
MT-5310W is designed with advanced power saving technology that provides long battery life for daily operation. The pistol grip also houses a removable battery that can vastly extend the overall operating time.

Views of MT-5310W/H

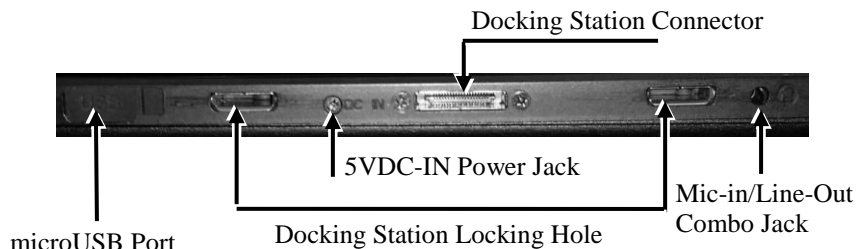
Front View



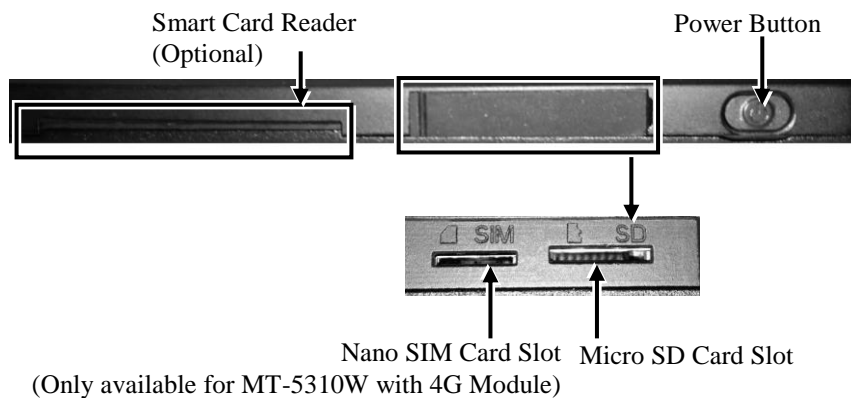
Rear View



Bottom Side View



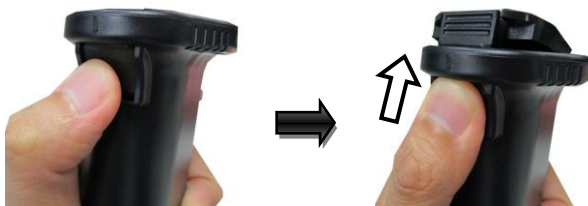
Left Side View



Load RB-3200 Battery Pack and a stylus into Pistol Grip PG-500 (for MT-5310W/R)

MT-5310W/R with PG-500 pistol grip support 1D CCD, 1D Laser, and 2D barcode scanner. Before the scanner can be initiated, it is required to install the battery pack RB-3200 and a stylus in the battery compartment inside the pistol grip. Please follow the steps listed below to finish the installation.

1. Press down the lever and then push up the cover for battery compartment as shown in the figure.



2. To replace the existing battery, gently push the metal clip outwards to release the battery. If you are installing the battery for the first time, please skip to the next step.



3. After having the rail on the battery pack aligned with battery clip, push down the battery pack into battery compartment.



4. Push down the cover to close the battery compartment.



Connecting the Pistol Grip onto MT-5310W/R

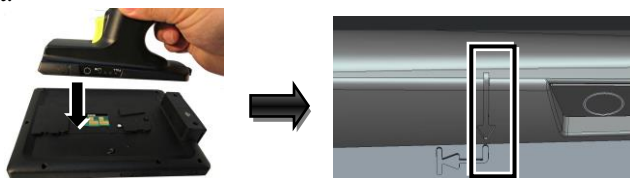
MT-5310W/R model is equipped with an additional pistol grip which aims to help users grip the terminal more easily while they are operating the scanner. Please refer to the following instructions to install the pistol grip onto the tablet.



Warning

Please note that MT-5310W/R can only operate with PG-500 pistol grip. Operating with PG-200/201 or other pistol grip model will cause some unknown problems or damages, which is considered as an artificial damage and is not covered by the warranty.

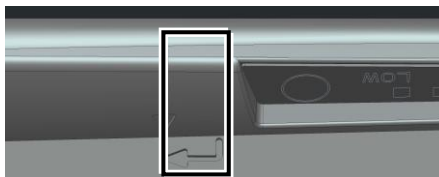
1. To attach the pistol grip to the tablet, align the arrow head on the top side of the pistol grip with the tail of the arrow on the rear of the tablet.



2. After ensuring the pistol grip is well attached to the tablet, push the pistol grip in the direction indicated by the arrow as shown in the figure.



3. Make sure the head of the down arrow on the pistol grip is supposed to be aligned with the head of the arrow on the rear side of the tablet as the below figure shows, which indicates the pistol grip is well mounted.



4. To check how much battery capacity remains in PG-500 pistol grip, press the battery capacity checking button on the pistol grip to show the current battery capacity level through the LED indicator.



Replacing the Pistol Grip with a Hand Strap Cover (Optional)

The hand strap cover is an optional peripheral designed for users to easily hold the tablet for operation. To replace the pistol grip with a hand strap cover, follow the steps listed below.

1. While pushing the release lever to the left (1), slide the pistol grip in the direction indicated by the arrow in the figure (2).



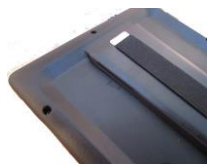
2. Pull the pistol grip off from the tablet.



3. Align the hand strap cover with the grooves on the rear side of the table.



4. Make sure that the hand strap cover is well attached to the rear side of the tablet.



5. Slide the hand strap cover up in the direction indicated by the arrow until it is clicked into place.



6. Fasten the hand strap cover onto the tablet using a screw.



Replacing the Hand Strap Cover with a Pistol Grip (Optional)

Please follow the below steps to replace the hand strap cover with a pistol grip.

1. Loosen the screw to remove the hand strap cover from the tablet.



2. Slide the hand strap cover down in the direction indicated by the arrow.



3. Remove the hand strap cover from the rear side of the tablet.



4. Go through the **Connecting the Pistol Grip onto MT-5310W/R** section which is described previously to complete the installation of the pistol grip onto the tablet.

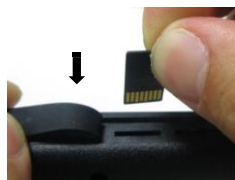
Installing micro SD Card or SIM card in MT-5310W

Please follow the below steps complete the installation of micro SD card and SIM card.

1. Turn off MT-5310W completely. Then, pull off the rubber cover located on the right side of your tablets to find micro SD card slot and nano SIM card slot.

2. Have the rear of the tablet face towards you to install micro SD card or SIM card.

- 2.1. To insert a micro SD card into the micro SD card slot, make sure the side with the golden finger of the card faces downwards, and then slide the card down into the slot.



- 2.2. Similarly, to install a SIM card, push SIM card into nano SIM card slot with its gold contacts facing towards you.



3. Pull off the rubber cover to close the compartment.
4. If you attempt to release a micro SD card or SIM card from the slot, push the card with your fingertip to slide it out.

Charging the Battery

Below are some cautionary advices you need to keep in mind while you attempt to charge the battery.

1. **MT-5310W is required to be charged over 8 hours when used for the first time.**
2. **When the low battery warning message appears as shown below, please fully charge the battery to avoid data loss.**



3. **When the low battery capacity indicator on the pistol grip beams or low battery warning message appears, please charge or replace the battery for the pistol grip immediately.**
4. **Only charge the battery with power adapter which comes with MT-5310W. Using a different power adapter may damage your device.**
5. **When the battery is running very low (less than 6 percent of battery capacity), the system will be automatically shut down to protect the battery from being over-discharged.**

Please go through the following instructions to charge MT-5310W using the power adapter.

For MT-5310W/R

In considering the battery life could be consumed drastically under heavy usage, you may also choose to purchase either another replacement battery RB-3200 for the pistol grip or the battery charger CS-100 for rapidly charging the replacement battery RB-3200.

1. Connect the power connector of the power adaptor to the tablet.



2. Plug the AC power adaptor cord into an electrical outlet. In general, the tablet battery will be charged first. Once the process of charging the tablet is complete, the pistol grip battery will then be charged.

For MT-5310W/H

1. Find the power jack on the left side of your tablet, and then connect the power connector of the power adaptor to it.
2. Plug the AC power adaptor cord into an electrical outlet to initiate the charging process.

Status LED Indicator

LED indicator is specially designed to deliver special message regarding the current system status and battery life. The blow chart enumerates all the possible LED indicators and its meaning for your reference.

LED Status	System Status	Descriptions
Solid blue	ON	■ System booting.
Solid Red	ON	■ System is being charged.
Blinking Red	ON	■ Battery charging error occurs
OFF	ON	■ System enters sleep mode. ■ System has been booted to Windows. ■ Battery is fully charged.
OFF	OFF	■ System powers off

Powering ON/OFF MT-5310W

Power ON MT-5310W

To power on MT-5310W, keep pressing the power button of the machine for 5-10 seconds. If the terminal falls into the sleep mode after remaining idle for a specific period of time, push the power button to wake the device up.

Power OFF MT-5310W

When MT-5310W stays in idle mode, push the power button to put your device into sleep mode, and press the power button again to wake up the tablet. To completely shut down the machine, you need to press and hold the power button for at least 20 seconds. In the case the system halts for unknown reasons, you are advised to hold down the button until a system shutdown is initiated.

Operating TA-220/300 Magnetic Stripe Reader (Optional)

MT-5310W model also offer MSR solutions. As optional items, TA-220/300 both allow you to integrate built-in MSR into MT-series tablet. However, TA-220 mainly supports MSR with RFID but TA-300 is an attachment combined with three-track MSR and finger printer sensor.

Please go through the following instructions on how to operate magnetic stripe reader provided via TA-220/300.

1. Have the side with the magnetic stripe of a card face the touch panel of the tablet.
2. Swipe the magnetic stripe card along the track of the reader from top to bottom or from bottom to top.



Operating the 1D/2D Scanner (for MT-5310W/R)

MT-5310W/R model is equipped with an optional 1D CCD, 1D Laser, or 2D scanners features 1D and/or 2D barcode scanning. It also supports two types of USB interfaces, USB HID or USB Virtual COM, and the scanner is generally set to USB HID mode by default. For more detailed information, please refer to the barcode scanner user manual.



Mounting TA-600 onto MT-series Tablet (Optional)

TA-600 is an external battery pack kit mainly designed to provide extra battery life to MT-series tablet. For the detailed installation instructions, please refer to TA-600 user manual.



Installing an Operating System

You are highly advised NOT to install or change the Windows operating system and drivers which are preloaded on MT-5310W without professional instructions. Not only might the careless handling during installation cause irreversible damage to your system, but also the improper installation likely leads to system malfunction or failure. Please contact with your dealers about the issues of operation system installation.

Performing System Recovery

For MT-5310W models with preloaded operating systems, you are NOT encouraged to recover your system without the help of the system integrators. Please be advised to contact your service center for further assistance with system recovery.

Installing Optional Upgrade Kits

Posiflex MT-5310W can work with multiple optional upgrade kits, such as MSR, Smart Card Reader and the like. For the detailed instructions, refer to the user manual related to each peripheral devices.

Specifications

MT-5310W	
System	
CPU	Kaby Lake-Y CPU
DRAM Memory	4GB / 8GB (4GB as default)
Rear Camera	5MP AF rear facing camera
Sensors	G sensor, ambient light sensor
Battery	7.6V/ 3570 mAh, 27.14Wh
Storage	
Storage	16GB/32GB/64GB eMMC (on-board) Or SSD (on-board)
OS Support	
OS Support	Windows 10 IoT (64-bit)
Display & Monitor	
Display	10" TFT LCD with LED backlight, 1920 x 1200
Touch Screen	P-CAP touch with multi-touch support
Expansion	
Wireless connectivity	1. WiFi IEEE 802.11a/b/g/n/ac + BT 4.0 2. Optional 4G LTE module (M.2 form factor, USB I/F)
Power	
Power Supply	5V/15W (2-pin plug) power adaptor
Outside I/O Ports	
Audio	Built-in speaker + Mic-in/Line-out combo port
USB Port	Micro USB x1 (non OTG USB Port)
SIM Card	Nano SIM card slot x 1 (only available for MT-5310W with 4G module)
Micro-SD Card	Micro-SD card slot x 1
Power Switch Button	Yes
LED Indicator	Blue color LED x 1 Red color LED x 1
Mechanical	
Dimension	260.7 (L) x 175.0 (W) x 16.8 mm (D)
Weight	950g

MT-5310W	
Optional Item	
Smart Card Reader	Yes, IDTECH MiniSmart II
4G comm.	4G LTE module
Sunlight readable	Sunlight readable panel display
Attachment	
TA-100	Side attachment with external USB 2.0 port
TA-220	Side attachment with three-track MSR and RFID
TA-300	Side attachment with three-track MSR and finger print sensor
TA-600	Battery pack Kit
PG-500	Pistol grip supports 1D/2D barcode scanning.
DS-110	Dock station: USB 2.0 x 3 + GbE x 1 + Serial Port x 2 + CR Port x 1 + DC-in + 2" WiFi Printer x 1
DS-200 / 210 / 220 / 300 / 310 / 320	Dock Station: USB 2.0 x 3 + GbE x 1 + Serial Port x 2 + CR Port x 1 + 3" WiFi Printer x 1

Note: (*) Either smart card reader or 4G module can be installed into MT-5310W system.

※ The product information and specifications are subject to change without prior notice. To get the detailed information on the MT-5310W, please check this model from Posiflex Global Website

<MEMO>