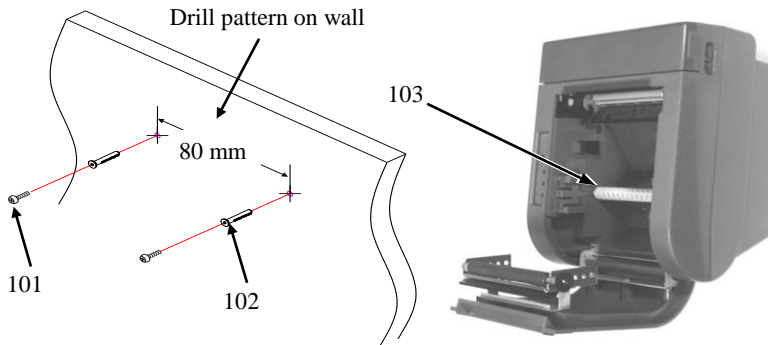


# INSTALLATION GUIDE FOR WALL MOUNT KIT OF PP6900/PP8900/PP9000 SERIES

**KIT PART NUMBER:** 39351001001(beige) / 39351001002(Charcoal)

**KIT CONTENT** (Besides this guide):



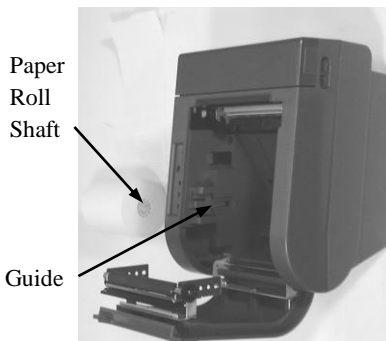
**Fig-1 Kit content besides this guide (Printer not included)**

ITEM	PART NUMBER	DESCRIPTION	Q'TY
101	10521040252	Self Tapping Screw 4φ-25L	2
102	MTP6PLUG	Plastic Cotter	2
103	PP30PAPRROLR	Paper Roller Shaft (Beige)	1
	PP30PAPRROLR-C	Paper Roller Shaft (Charcoal)	

**KIT APPLICATION:** This kit can be used to hang Posiflex thermal POS printer PP6900/PP8900/PP9000 for wall-mount application. Color of the wall mount kit can be selected to match that of the printer.

## INSTALLATION

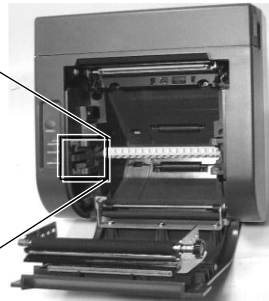
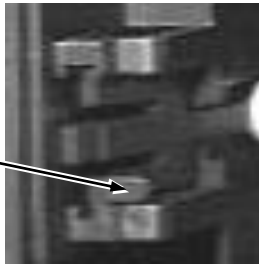
1. Please first determine a suitable area on a rigid wall surface to support firmly the weight of the printer for its wall mount application. In this area, the environmental condition should be adequate for a reliable service of the printer. Considerations include sufficient ventilation and effectively protected against unwanted contamination. Keep the printer away from direct sunshine, excessive heat or moisture. Please then follow the preparation procedures described below. Drill 2 holes 3.15" or 80 mm apart at same height on the rigid wall. Hole diameter should be 1/4" or 6.35 mm each. Hole depth should be at least 1 and 3/16" or 30 mm. Please then insert one plastic cotter into each hole leaving the flat end with hole of the plastic cotter at the outside opening of the hole on wall. Use a hammer to tap the plastic cotter in gently if necessary. Insert the attached screws into the plastic cotter and screw in but leaving about 7 mm or 9/32" of screw neck exposed from wall surface. These 2 screws will then be used for hanging the printer. The remaining 2 sets of the screws and plastic cotters are reserves for user's convenience.
2. To prevent any confusion as a result from different paper roll position in wall mount application, please change in service window DIP switch 1 position 5 to ON. So that the printer won't respond to host as "busy" just by paper near end signal caused by this position change.
3. Next, slide the hood lock toward the front of the printer, the hood will now fully open. Insert the paper roller shaft in the paper roll and put the whole paper roll inside the printer along the guides on both sides till it clicks to hold the paper roll in position for wall mount application. Close the hood and tear off the excessive paper.



4. Now please note that on bottom of the printer, there are 2 holes 80 mm apart for hanging the printer over the screws on wall. Please make all necessary cable connections to the printer and hang it over the 2 screws on the wall. Then the printer is ready for wall mount operation.
5. When paper is used up in wall mount application, the paper roll shaft will remain locked in the printer as in the picture below. Please press the lever of the shaft holder at the point as indicated in the picture to release one end of the paper roll shaft from it. Do the same on the other end when necessary.



Press  
Here



6. If the environment for wall mount application of the printer has a lot of falling contaminants, please order for a special switch cover to lay over the power switch and protect it from consequent malfunction.

**<MEMO>**